

# BIG Completes First Home for Mountain-Shaped Resort in Taiwan

Source: [dezeen.com](http://dezeen.com)

Published: November 5, 2015



[Olivia Mull](#)

The first [holiday home](#) has been built at the [BIG](#)-designed Hualien Residences, a mountain-shaped resort development in Taiwan (+ slideshow).



*Photograph by BIG*

The 1,000-square-metre house is the first building on the site, which is five kilometres south of Hualien City, between the ocean and mountains.

There is a growing demand for second homes in the area, and a change in travel permissions between China and Taiwan is also expected to bring in a new wave of holidaymakers to the region.



The model home consists of layered volumes that create a zigzagging profile, with "green landscape stripes" and solar panels on the roof, and full-height glazing on the front and back.

The wide variety of buildings planned for the site all have similarly-jagged outlines. Once completed, their shapes will create a stylised version of the spine of mountains to the west.



[BIG](#) described the Hualien Residences as "a mountain landscape of commercial and residential program that reflect their natural counterparts in the background."

The strips of green roof meet the ground in on either side and run from east to west to block out the glaring morning and evening sun. When the development is complete, the roofs will create "canyons" between the buildings.



"The angled silhouettes add an almost traditional vernacular feeling of attics and porches in the middle of the dense modern development," said BIG.



*This photograph shows seating and a coffee table inside the model holiday home at Hualien Residences*



Outdoor paths will snake around the site, while underground "jogging pathways" will be added to encourage residents to exercise. The complex will also house an on-site medical centre.



*KiBiSi's collection of furniture on show in the Hualien Residences model home has been designed to compliment the architecture of the houses*

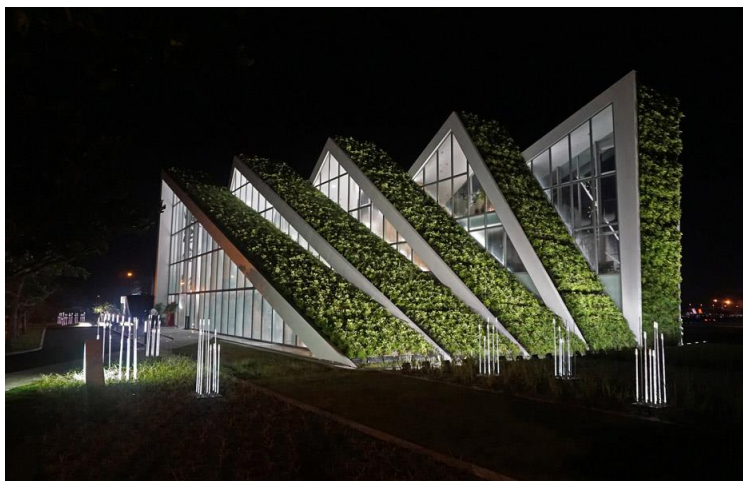
A path that wraps around the whole area will include an observation point, stage, shops, and restaurants and cafes with outdoor seating areas. Media rooms, lounges, libraries, pools and meditation areas will provide other communal spaces for the residents.



BIG was commissioned by Taiwan Land Development Corporation, the owner of the site in a former industrial and factory region of Taiwan, to create the scheme.



The show home was built to tempt potential buyers ahead of construction of the rest of the development, which is scheduled to complete in 2018.



KiBiSi – the Danish design supergroup co-founded by Ingels – has created furniture to compliment the architecture of the houses, which is on show in the model home.



*This visualisation shows the offset outlines of the buildings at Hualien Residences, which will create a stylised version of the spine of mountains to the west*

The collection includes lounge seating and sunbeds, a wooden dining table, a lamp, a chest of drawers, a coffee table and shelving.



*This visualisation shows the site of Hualien Residences, which is five kilometres south of Hualien City, between the ocean and mountains*

BIG has created a number of other housing projects with green roofs, including [a foliage-covered terraced block of apartments in Stockholm](#) and [a residential building in Copenhagen with sloping planted roofs](#).

Photography is by Jinho Lee, unless otherwise stated.

---